

ACTA SIMULATIO

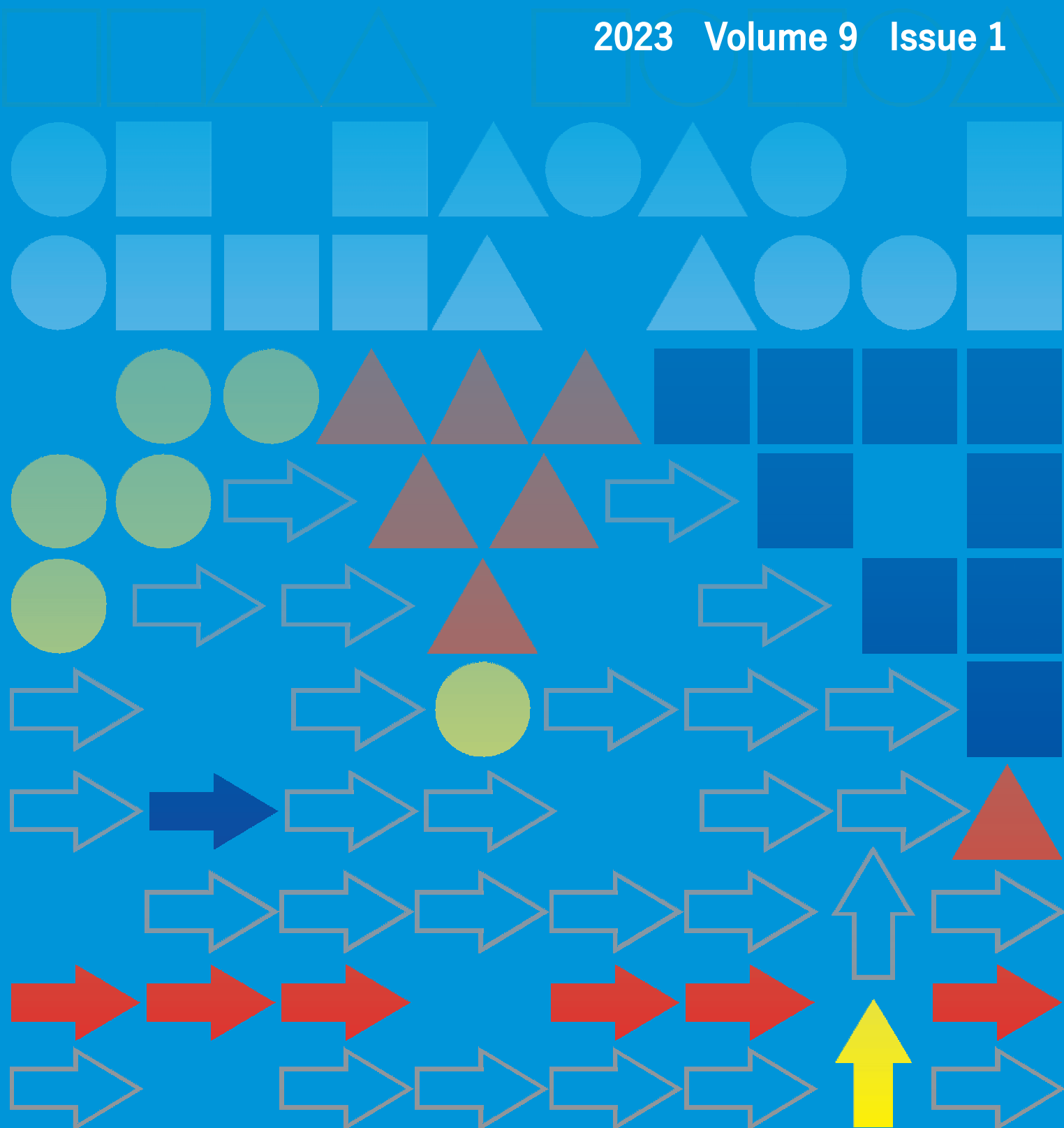
International Scientific Journal about Simulation

electronic journal

ISSN 1339-9640



2023 Volume 9 Issue 1



CONTENTS

(MARCH 2023)

(pages 1-8)

EXPLORATION OF 3D OBJECTS: METHODS FOR SIMULATION, APPLICATION, AND PRESENTATION

Marek Kliment, Laura Lachvajderova, Tomas Svantner, Matus Matiscsak

(pages 9-14)

USE OF PRODUCTION PROCESS SIMULATION AS A VERIFICATION TOOL

Jan Kopec, Miriam Pekarcikova, Marek Mizerak, Jozef Trojan

Exploration of 3D objects: methods for simulation, application, and presentation

Marek Kliment, Laura Lachvajderova, Tomas Svantner, Matus Matiscsak

<https://doi.org/10.22306/asim.v9i1.94>

Received: 25 Feb. 2023

Revised: 12 Mar. 2023

Accepted: 19 Mar. 2023

Exploration of 3D objects: methods for simulation, application, and presentation**Marek Kliment**

Technical University of Košice, Faculty of Mechanical Engineering, Department of Industrial and Digital Engineering,
Park Komenského 9, 04200, Košice, Slovak Republic, EU, marek.kliment@tuke.sk (corresponding author)

Laura Lachvajderova

Technical University of Košice, Faculty of Mechanical Engineering, Department of Business Management and
Environmental Engineering, Park Komenského 5, 04200, Košice, Slovak Republic, EU, laura.lachvajderova@tuke.sk

Tomas Svantner

Technical University of Košice, Faculty of Mechanical Engineering, Department of Industrial and Digital Engineering,
Park Komenského 9, 04200, Košice, Slovak Republic, EU, tomas.svantner@tuke.sk

Matus Matiscsak

Technical University of Košice, Faculty of Mechanical Engineering, Department of Industrial and Digital Engineering,
Park Komenského 9, 04200, Košice, Slovak Republic, EU, matus.matiscsak@tuke.sk

Keywords: manufacturing workflow, Tecnomatix Plant Simulation, design, model.

Abstract: Simulation programs have revolutionized the operations of major corporations in the 21st century. These programs offer meticulous recording and analysis of processes, enabling the identification and resolution of bottlenecks, deficiencies, and errors that could arise during real-world production. Simulations provide comprehensive insights into the entire production process, even before it begins, ensuring optimal efficiency and minimizing downtime and mistakes. They can be customized to varying levels of complexity, encompassing process-oriented perspectives and visually detailed representations. To ensure accuracy, analyzing and evaluating available data is crucial, supplementing it with necessary information to enhance the virtual representation's fidelity. In this discussion, we will primarily explore the modeling of 3D objects within detailed simulations and their subsequent application and interpretation in diverse contexts.

1 Introduction

The modeling of 3D objects and the methods of their application and presentation have gained significant importance in both simulation environments and beyond. In this era of advanced technology, the ability to create accurate and realistic 3D models has opened up a world of possibilities for various industries. From engineering and manufacturing to entertainment and architecture, the utilization of 3D objects has become a fundamental aspect of visualizing and analyzing complex systems and designs. Within the realm of simulation, the modeling of 3D objects allows for a comprehensive understanding of processes and facilitates the identification of potential issues or optimization opportunities. Simulation software, such as Tecnomatix Plant Simulation, provides a platform for integrating these models seamlessly into virtual environments, enabling the exploration and fine-tuning of production processes with enhanced accuracy and efficiency [1].

However, the application and presentation of 3D models extend far beyond the boundaries of simulation. These models find applications in product design, virtual prototyping, architectural visualization, and even immersive experiences like virtual reality. They serve as powerful tools for communicating ideas, showcasing concepts, and facilitating informed decision-making.

This study focuses on exploring the utilization of 3D visualization and the integration of models within the Tecnomatix Plant Simulation software. Additionally, it examines the application and presentation of these models in diverse contexts beyond the simulation environment. The software provides a comprehensive library of predefined models, encompassing basic representations of machinery, conveyor belts, and various types of transportation vehicles. Users have the flexibility to customize the graphics of these objects within the simulation, allowing for visual modifications according to their specific requirements [2].

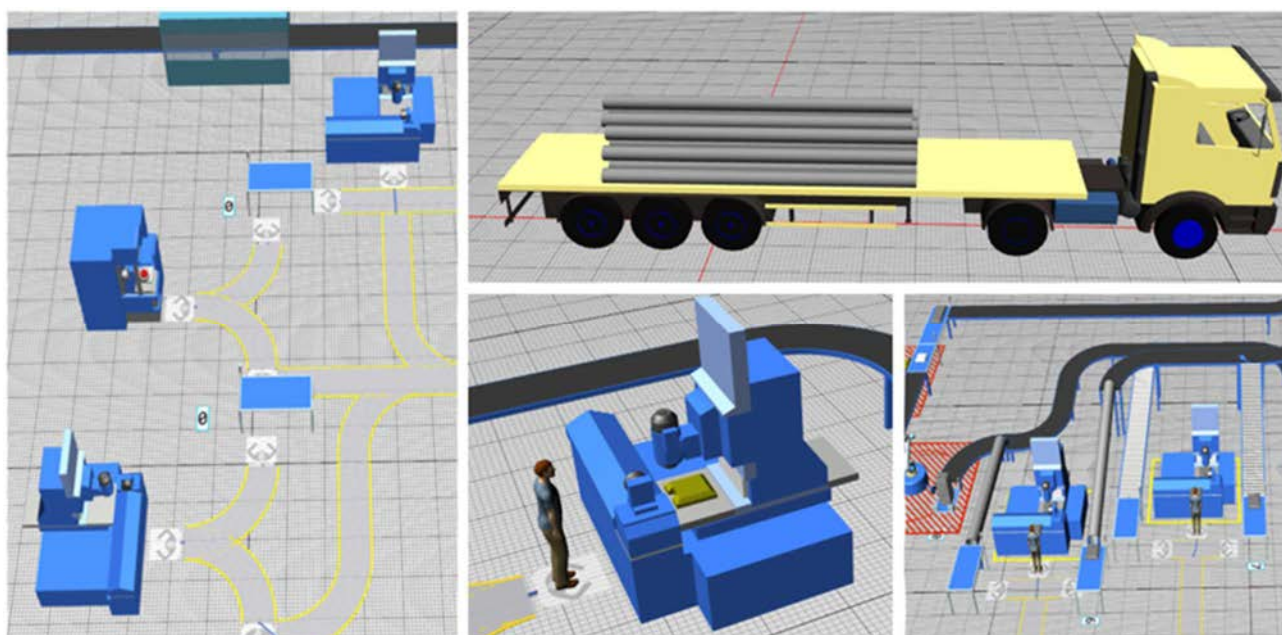


Figure 1 3D objects available in the TX Plant Simulation library

2 Development of 3D model

In addition to modifying the graphical representation of simulation objects using the software's default graphics, there is also the option to connect with CAD software. This connection is essential for obtaining precise dimensions and specifications of individual devices or components in most simulations. Consequently, it involves the complete processing of these elements using CAD software. However, the integration between simulation and CAD software is not direct and seamless. For this particular simulation, we employed SolidWorks CAD software, developed by Dassault Systèmes SolidWorks Corporation. As the production process focused on creating a bearing puller (refer to Figure 2), each individual part underwent distortion and was subsequently exported in a compatible file format, allowing it to be readable within the simulation software and integrated into the overall simulation setup [3]. Prior to the actual distortion of parts within the software, this process was preceded by creating detailed drawing documentation. SolidWorks CAD software also offers the option to generate digital forms of drawing documentation as one of its output possibilities.



Figure 2 Components of the Puller Body

The puller body represents the foundational structure of the entire part, making it the initial focus of production as discussed and optimized in the previous chapter. As the core component, it is the first element to be incorporated into the assembly process. The second part involves attaching a screw to the central hole of the body using an internal thread. This screw applies pressure to the bearing that requires disassembly. Careful design ensures that the screw does not damage the surface of the part being manipulated. It features a hexagonal head, allowing for the use of a ring or open-end wrench. Six short arms are attached to the puller body at the assembly site using

Exploration of 3D objects: methods for simulation, application, and presentation

Marek Klimont, Laura Lachvajderova, Tomas Svantner, Matus Matiscsak

specialized production equipment. These short arms facilitate movement and overall adjustment of the long arms based on the size of the component being manipulated. The long arm, which is the final part, undergoes assembly just prior to packaging and shipping. Due to its complex shape, the long arm is designed using casting technology. In the simulation, this component is considered a purchased item delivered directly to the assembly site. To simulate the functionality of all parts and identify any potential errors, CAD software is employed to assist in the assembly process. Standardized components like nuts, bolts, and washers are incorporated into the assembly, adhering to ISO standards during the design phase. SolidWorks CAD software provides access to a library of these standardized parts. To ensure comprehensive project documentation, the software also offers the option to create drawing documentation for the entire assembly. It is worth mentioning that the exact material specifications are defined, allowing for the calculation of the total weight of the manufactured part.

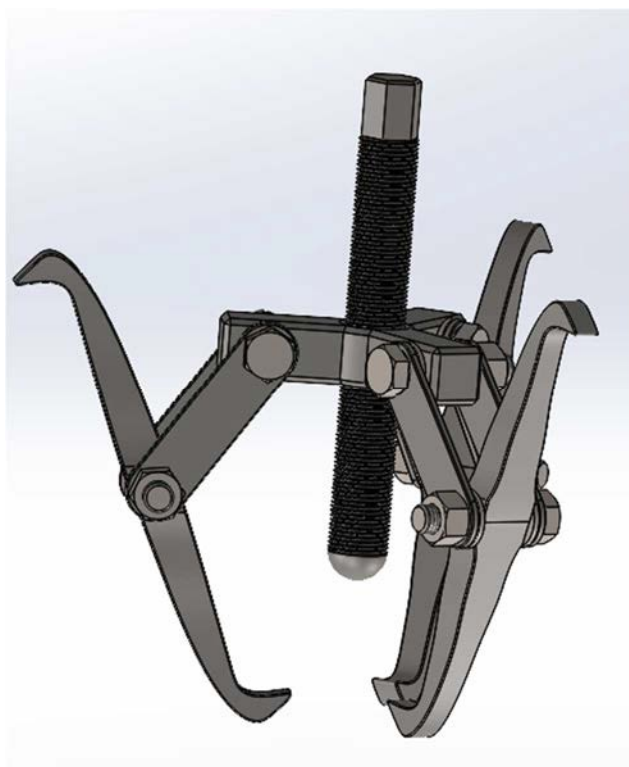


Figure 3 Assembly - The Puller

2.1 Integration of 3D objects into the Plant Simulation environment

The distorted 3D models created using CAD software can be seamlessly integrated into the simulation as part of the material flow. This process is similar to inserting objects from the default library of the simulation software. Within the CAD software, the specific model is exported in the form of a STEP file, which ensures convenient conversion to other file formats. To facilitate compatibility with the simulation, the exported file is then converted to the JT file format using a readily available online converter [4].

The JT file format is essential for the successful integration of the 3D models into the simulation. This format allows for efficient data transfer and ensures that the models can be accurately represented within the simulation environment. By converting the file to JT format, the necessary compatibility is established, enabling smooth and seamless integration of the distorted 3D models into the simulation workflow.

This streamlined process of converting and importing the CAD-distorted models ensures that the simulation accurately reflects the real-world production environment. It allows for the detailed analysis of material flow and enables precise evaluation of production processes. By leveraging readily available tools and file formats, users can effectively utilize their CAD-created models within the simulation, enhancing the overall accuracy and effectiveness of the virtual environment [5].

Exploration of 3D objects: methods for simulation, application, and presentation

Marek Kliment, Laura Lachvajderova, Tomas Svantner, Matus Matiscsak

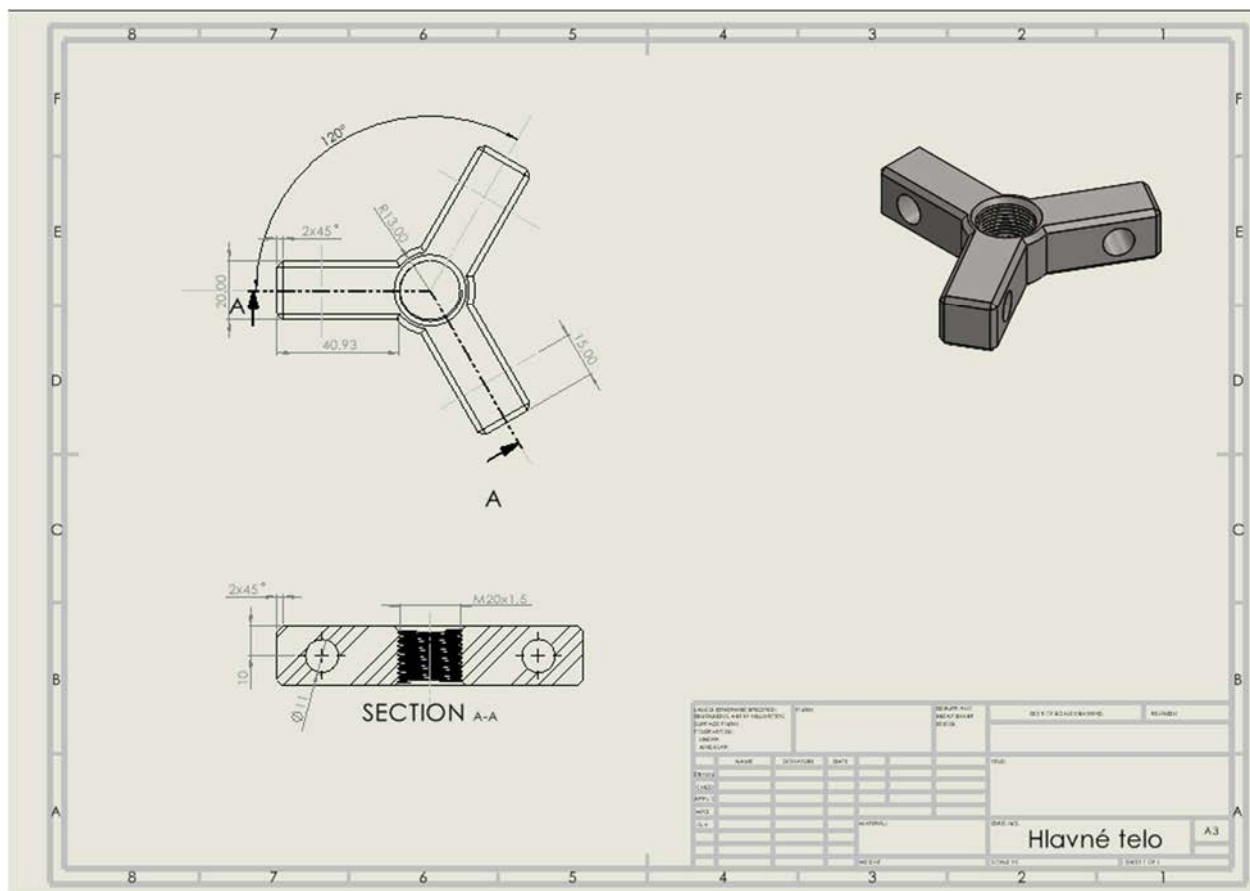
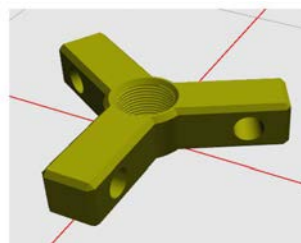


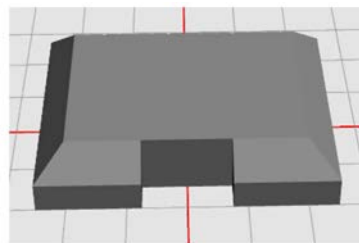
Figure 4 Drawing documentation generated through the utilization of CAD software



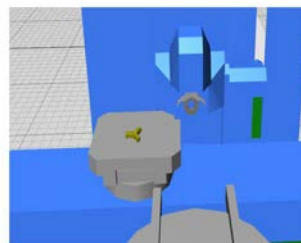
Selection of the converted JT file



Custom graphic display of the puller's body in simulations



Default graphic display of the puller's body in simulations



The puller body clamped at the milling workplace

Figure 5 Incorporating models into the simulation environment

The integration of distorted 3D models created in CAD software into the simulation is a straightforward process. Similar to inserting objects from the simulation software's

default library, these models become part of the material flow. The CAD software exports the models as STEP files, which can be easily converted to other formats. Converting

Exploration of 3D objects: methods for simulation, application, and presentation

Marek Klimont, Laura Lachvajderova, Tomas Svantner, Matus Matiscsak

the exported files to the JT format is crucial for seamless integration into the simulation environment. The JT format ensures efficient data transfer and accurate representation of the models within the simulation. This streamlined process enables a faithful reflection of the real-world production environment, allowing for detailed material flow analysis and precise evaluation of production processes. Leveraging available tools and file formats empowers users to effectively utilize their CAD models, enhancing the overall accuracy and effectiveness of the virtual environment.

2.2 Output and presentation options for the simulated production process

Virtual reality (VR) can be effectively employed as a means of representing the simulated production process, serving various purposes in the realm of training and immersive experiences. This widely recognized technology is frequently utilized in training operators who operate specific assembly equipment, offering a realistic and hands-on learning environment. The integration of VR with the simulation process further enhances the overall experience and effectiveness of the training.

By incorporating VR technology into the simulation, users can delve into a virtual world that closely replicates the production environment. They can explore and interact with the simulated equipment, machinery, and processes in a highly immersive manner. This realistic representation facilitates a deeper understanding of the production workflow and enables operators to gain practical experience in a safe and controlled setting [6].

The use of VR in conjunction with the simulation allows for a more comprehensive and engaging training experience. Operators can practice and refine their skills, familiarize themselves with equipment functionalities, and develop efficient strategies for handling various production scenarios. This immersive approach helps operators build confidence, improve decision-making abilities, and enhance overall performance. Moreover, VR technology provides the opportunity for collaborative training and remote learning. Multiple users can participate simultaneously in the virtual environment, regardless of their physical location. This feature enables effective teamwork, knowledge sharing, and the exchange of best practices among operators and trainees.



VR Headset Oculus Rift S



Application Oculus



Application Steam

Figure 6 VR resources and tools

The Steam application serves as a bridge for facilitating communication between the simulated manufacturing process and the Oculus application. It acts as a mediator, enabling seamless interaction and data exchange between the two systems. The Steam app plays a crucial role in establishing a connection between the simulation software and the Oculus app, ensuring that the virtual reality experience is effectively synchronized with the simulated manufacturing environment. It handles the transmission of information, commands, and feedback, allowing for real-time interactions and accurate representation of the production process within the virtual reality setting.

The integration of virtual reality into the simulated production process brings numerous benefits. It offers a representative and immersive experience, particularly for training operators. By leveraging VR technology, operators can develop practical skills, enhance decision-making capabilities, and foster collaboration in a safe and controlled virtual environment [7].

2.3 3D printing

3D printing technology offers another valuable tool for visualizing the production process and manufactured parts. This technology serves multiple purposes, including confirming precise dimensions and representing the final outcome of the production process. By utilizing additive manufacturing techniques, such as 3D printing, practitioners can create physical prototypes that accurately reflect the intended design. This process enables a tangible representation of the part, allowing for a thorough examination of its dimensions and features. Through 3D printing, the intricate details of the part can be realized, providing a realistic representation of the final product.

3D printing technology plays a crucial role in showcasing the entire production process. By printing individual components or assemblies, stakeholders can physically observe the progressive stages of production and gain a deeper understanding of the overall manufacturing workflow [8].

Exploration of 3D objects: methods for simulation, application, and presentation

Marek Klimont, Laura Lachvajderova, Tomas Svantner, Matus Matiscsak

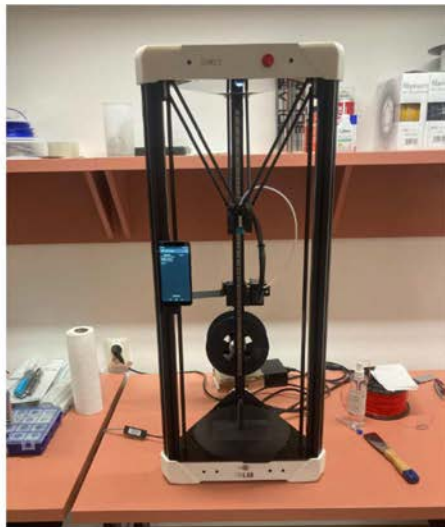


Figure 7 3D printing of a bearing puller

The utilization of 3D printing technology serves as a practical solution in this context, aiding in the confirmation of dimensions and providing a tangible representation of the production process. It enables practitioners to validate designs, assess functionality, and identify potential areas for improvement. By leveraging the benefits of 3D printing, stakeholders can enhance their visualization capabilities and make informed decisions throughout the production journey.

3 The application of holographic imaging in simulated production

In addition to their applications in simulation, 3D printing, and virtual reality, holographic projectors offer an alternative method to visualize and present created models. Unlike conventional two-dimensional images captured by cameras or video cameras, holographic projections provide a spatial representation that goes beyond the flatness of traditional images. While techniques like those used in 3D cinema can create the illusion of depth, they lack true spatial characteristics such as parallax. Parallax refers to the variation in the position of different points within an image when viewed from different angles. In contrast, holographic projections offer a more immersive experience by allowing viewers to observe scenes from different perspectives and even glimpse objects from behind. True holographic methods are based on specific conditions and specialized tools. The fundamental process involves directing a laser at a semi-transparent mirror, which splits the light into two beams. One beam interacts with the object being recorded, while the other reflects off another mirror. The two beams eventually intersect on a photographic film, creating an interference pattern that forms the hologram.

Conventional images captured by cameras or video cameras are limited to a two-dimensional representation. This means that they lack the ability to convey depth and

spatial information, as they are interpreted and displayed on a flat surface, such as a desktop. While there are techniques, such as those used in 3D cinema, that attempt to overcome the flatness of a two-dimensional image, they are not truly spatial in nature. Although they can create the illusion of depth by making certain parts of the image appear closer than others, they lack a crucial element known as parallax. Parallax refers to the positional difference of two distinct points within an image when viewed from different angles. In a typical 3D cinema experience, even if you were to move several seats to the right or left, you would still perceive the same image without any change in perspective. However, if the image were a hologram, you would observe the scene from a slightly different viewpoint, allowing you to partially see behind displayed objects. Holograms possess the unique characteristic of providing a more immersive and dynamic viewing experience. They enable viewers to perceive the entire scene from different angles, creating a sense of depth and allowing glimpses of hidden details. Unlike traditional images, holograms offer a more realistic representation of three-dimensional space and enhance the overall visual engagement and interactivity for viewers.

A true hologram is a holographic image captured from two different perspectives, resulting in a visual experience where each viewpoint offers a slightly different perception, resembling a real scene. While there are various techniques and illusions that mimic three-dimensionality, genuine holographic methods are limited and require specific conditions and specialized tools for their creation. To simplify the process, a laser is directed at a semi-transparent mirror, splitting the light into two beams. One beam illuminates the object and is reflected, while the other beam reflects off another mirror. Eventually, the two beams intersect on a photographic film, generating an interference pattern that forms the hologram [9].

Exploration of 3D objects: methods for simulation, application, and presentation

Marek Kliment, Laura Lachvajderova, Tomas Svantner, Matus Matiscsak

However, this process solely captures the hologram on the film. To display the hologram, a similar illumination technique is employed, recreating the original recording conditions. However, it's important to note that current holographic technology is not yet capable of capturing and reproducing moving objects with convincingly sharp and smooth results. As a result, alternative technologies are used to create spatial images, even though they have limitations and cannot produce true holograms. Nevertheless, these techniques can create compelling illusions that are often sufficient for various applications.

Rotating holographic projector

One common method used to create a holographic-like effect is through the use of a rotating projector. This "holographic projector" typically consists of rotating arms with RGB diodes attached. As the arms spin rapidly, the LEDs emit flashes of light. The rotation speed is carefully synchronized with the blinking of the LEDs, making sure that the colors are always displayed in specific positions within the circular "display area." The resulting effect gives the impression of a transparent image floating in space. However, it's important to note that this approach lacks true spatiality. The movement of the "holographic fan" arms only creates a surface, resulting in a two-dimensional image. Consequently, these fans do not generate actual holograms but rather transparent two-dimensional images.

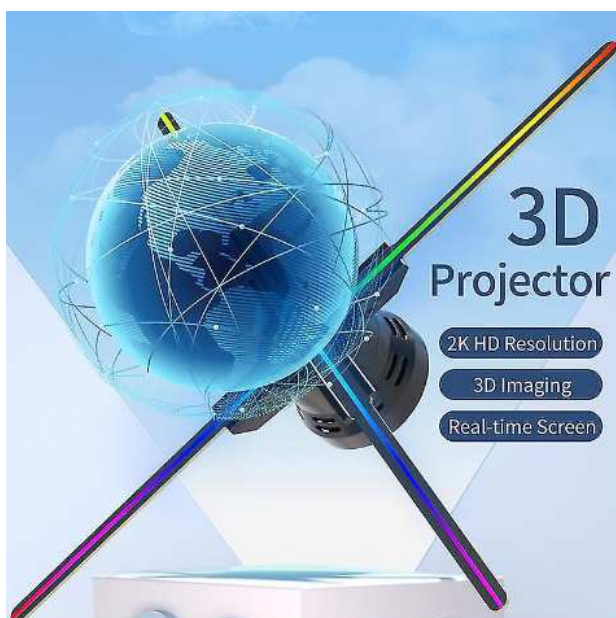


Figure 8 Rotating holographic projector

This type of projector utilizes rotating arms equipped with RGB diodes. As the arms rotate, the diodes emit flashes of light. The rotation speed is precisely synchronized with the diode blinking, ensuring that the colors appear in specific positions within the circular "display area." This creates the illusion of a transparent

image suspended in space. However, it is important to note that this setup does not produce genuine holograms but rather two-dimensional images with a sense of depth. The rotation of the arms creates a surface-like effect, limiting the projection to a flat plane instead of true three-dimensional representation [10].

4 Conclusions

The simulation aspect of the project aims to enhance the visualization of the production process for improved efficiency. By leveraging the capabilities of simulation software and combining various inputs and outputs, it becomes possible to design and comprehend proposed changes in the manufacturing process more effectively. Integrating custom 3D objects into the simulation creates a digital twin, allowing for a realistic representation of a production line, which is particularly advantageous considering the limited library of machines and their components in the Tecnomatix Plant Simulation program.

The practical part of the study focuses on the integration of custom 3D objects, designed using Solidworks modeling software, with the simulation. This section covers the creation of custom objects, the documentation of these objects, and their subsequent conversion into the required file format for seamless integration with the simulation. Moreover, these models can be utilized for 3D printing, enabling the physical production of objects, or showcased on various holographic projectors to visualize and present them in an immersive manner.

Overall, this research explores the potential of combining simulation, custom 3D modeling, 3D printing, and holographic projection to enhance the understanding and implementation of manufacturing process improvements.

Acknowledgement

This article was created by the implementation of the grant projects: APVV-17-0258 Digital engineering elements application in innovation and optimization of production flows, APVV-19-0418 Intelligent solutions to enhance business innovation capability in the process of transforming them into smart businesses. VEGA 1/0438/20 Interaction of digital technologies to support software and hardware communication of the advanced production system platform. KEGA 020TUK-4/2023 Systematic development of the competence profile of students of industrial and digital engineering in the process of higher education. VEGA 1/0508/22 „Innovative and digital technologies in manufacturing and logistics processes and system “.

References

- [1] BURGANOVA, N., GRZNÁR, P., MOZOL, Š.: *Challenges of factory of future in the context of*

Exploration of 3D objects: methods for simulation, application, and presentation

Marek Kliment, Laura Lachvajderova, Tomas Svantner, Matus Matiscsak

- adaptive manufacturing*, Proceedings of the conference: Invention for enterprise 2021, Žilina, 2021.
- [2] KOVÁČ, M.: *Fenomén inovácií*, In: Podpora inovácií: stratégie, nástroje, techniky a systémy, Košice, CITR, pp. 7-40, 2010. (Original in Slovak)
- [3] TREBUŇA, P., PEKARČÍKOVÁ, M., KLIMENT, M., TROJAN, J.: *Metódy a systémy riadenia výroby v priemyselnom inžinierstve*, Košice, TU v Košiciach, Strojnícka fakulta, Univerzitná knižnica, 2019. (Original in Slovak)
- [4] PEKARČÍKOVÁ, M., TREBUŇA, P., KLIMENT, M., EDL, M., ROSOCHA, L.: Transformation the logistics to digital logistics: theoretical approach, *Acta logistica*, Vol. 7, No. 4, pp. 217-223, 2020. <https://doi.org/10.22306/al.v7i4.174>
- [5] MOZOLOVÁ, L., MOZOL, Š., GRZNÁR, P., GREGOR, M.: *Comparison of the use of 2D and 3D views in the Tecnomatix Plant Simulation Platform*, Proceedings of the conference: Trends and Innovative Approaches in Business Processes 2021, Herľany, 2021.
- [6] GOLA, A., PLINTA, D., GRZNAR, P.: *Modelling and simulation of reconfigurable manufacturing system for machining of casing-class parts*, Proceedings of the 21st International Scientific Conference Engineering for Rural Development, Jelgava, 26.-28.05.2021, pp. 1563-1568, 2021. <https://doi.org/10.22616/ERDev.2021.20.TF333>
- [7] GASOVA, M., GASO, M., STEFANIK, A.: *Advanced Industrial Tools of Ergonomics Based on Industry 4.0 Concept*, Procedia Engineering, Vol. 192, Transcom 2017 12th International Scientific Conference of Young Scientists on Sustainable, Modern and Safe Transport, High Tatras, Grand Hotel Bellevue, Slovakia, 31.05.-02.06.2017, pp. 219-224, 2017.
- [8] FUSKO, M., RAKYTA, M., DULINA, L., SULIROVA, I., EDL, M.: Digitization in the Technical Service Management System, *MM Science Journal*, Vol. 1, pp. 2260-2266, 2018.
- [9] GLOVA, J., SABOL, T., VAJDA, V.: Business Models for the Internet of Things Environment: Emerging Markets Queries in Finance And Business (Emq 2013), *Procedia Economics and Finance*, Vol. 15, pp. 1122-1129, 2014.
- [10] MARSCHALL, M., GREGOR, M., DURICA, L., VAVRIK, V., BIELIK, T., GRZNAR, P., MOZOL, S.: Defining the Number of Mobile Robotic Systems Needed for Reconfiguration of Modular Manufacturing Systems via Simulation, *Machines*, Vol. 10, No. 5, pp. 1-20, 2022. <https://doi.org/10.3390/machines10050316>

Review process

Single-blind peer review process.

Use of production process simulation as a verification tool

Jan Kopec, Miriam Pekarcikova, Marek Mizerak, Jozef Trojan

<https://doi.org/10.22306/asim.v9i1.97>

Received: 27 Feb. 2023

Revised: 15 Mar. 2023

Accepted: 26 Mar. 2023

Use of production process simulation as a verification tool

Jan Kopec

Technical University of Košice, Faculty of Mechanical Engineering, Department of Industrial and Digital Engineering,
Park Komenského 9, 04200, Košice, Slovak Republic, EU, jan.kopec@tuke.sk (corresponding author)

Miriam Pekarcikova

Technical University of Košice, Faculty of Mechanical Engineering, Department of Industrial and Digital Engineering,
Park Komenského 9, 04200, Košice, Slovak Republic, EU, miriam.pekarcikova@tuke.sk

Marek Mizerak

Technical University of Košice, Faculty of Mechanical Engineering, Department of Industrial and Digital Engineering,
Park Komenského 9, 04200, Košice, Slovak Republic, EU, marek.mizerak@tuke.sk

Jozef Trojan

Technical University of Košice, Faculty of Mechanical Engineering, Department of Industrial and Digital Engineering,
Park Komenského 9, 04200, Košice, Slovak Republic, EU, jozef.trojan@tuke.sk

Keywords: simulation, SolidWorks, production process.

Abstract: This article deals with the use of manufacturing process simulation as a verification tool. Simulation proves to be a valuable tool for testing and evaluating production processes and their effectiveness in a controlled virtual environment. The authors discuss the advantages that simulation brings, such as the identification of defects, the optimization of production parameters, and the prevention of problems even before the start of the real production process. The use of simulation of the production process enables the acquisition of valuable knowledge about the influence of various factors on the final product quality, the optimization of production procedures, and the minimization of the risk of errors. The authors emphasize that the simulation provides accurate information that helps in the decision-making process and allows the prediction of possible problems and their solutions before they arise.

1 Introduction

Simulation is a powerful tool used to address complex problems that cannot be effectively solved using simple mathematical models. The dynamic nature of these problems and the presence of uncertainties make simulation an appropriate approach. Different types of simulation can be categorized based on the specific problem they aim to support. For instance, managerial or strategic problems can benefit from simulation methods that are tailored to management-oriented scenarios, such as Monte Carlo simulation or scenario analysis. These methods can be further enhanced by incorporating visualization techniques or historical data. One practical application of simulation is in supply chain planning, which involves tasks like optimizing warehouse positioning or selecting suppliers. Simulation can provide valuable insights and aid in making informed decisions in such scenarios [1,2].

The other type of problem that simulation can address is technical in nature, specifically operational problems that arise in engineering. These problems require technical simulation methods to make informed decisions. They are often associated with the concept of the digital factory, which emphasizes the use of simulation in the engineering and manufacturing domains. This paper distinguishes between two types of technical simulation: simulation of

complete production processes and machine-oriented simulation focusing on individual manufacturing cells [3].

The primary objective of the first type, simulation of complete production processes, is to support the planning of specific production processes or improve existing processes by analyzing key performance indicators such as cycle times or Overall Equipment Effectiveness (OEE). The goal is to optimize these processes and identify areas for improvement. This type of simulation is crucial for enhancing efficiency and productivity in manufacturing operations (Figure 1).

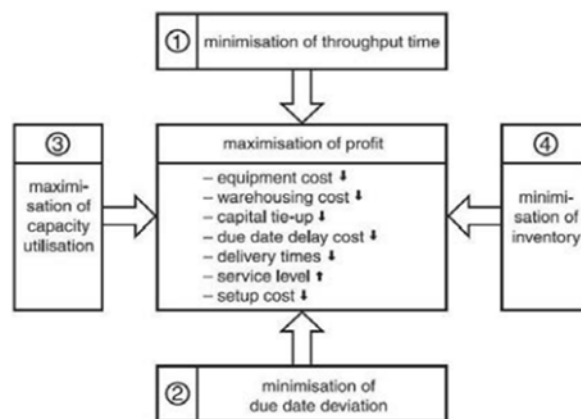
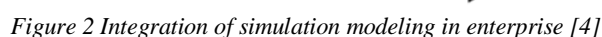


Figure 1 Goals of process simulation [3]

Jan Kopec, Miriam Pekarcikova, Marek Mizerak, Jozef Trojan

Firstly, there is a push toward integrating simulation models with broader enterprise-level systems. This means that simulation is not limited to individual components or processes, but rather aims to capture the entire enterprise

Secondly, the development of new simulation systems is also directed toward enhancing the capabilities of modeling complex interactions and dynamics within the enterprise. This includes considering factors such as supply chain networks, resource allocation, and information flows in a more interconnected and realistic manner. The goal is to create simulation models that can capture the intricacies of the entire enterprise system, enabling more accurate predictions and evaluations of its performance [4].



Use of production process simulation as a verification tool

Jan Kopeck, Miriam Pekarcikova, Marek Mizerak, Jozef Trojan

Horizontal integration involves the integration of manufacturing and assembly processes with the entire logistics chain of the enterprise, including external processes with suppliers and various supply strategies, distribution networks, market dynamics, demand forecasting, and other related factors. This integration aims to create a seamless flow of information, materials, and resources throughout the entire manufacturing environment.

On the other hand, vertical integration pertains to the integration of decision-making processes at strategic, tactical, and operational levels within the production planning and control system. At the strategic level, an aggregate system is modeled without including detailed operating or control logic. Strategic-level decisions involve long-term plans for production requirements and production resources. The objective is to align planned and actual requirements and resources to the greatest possible extent, ensuring effective utilization of resources and meeting production goals.

2 SolidWorks animation

SolidWorks is a professional software for 3D modeling, design, and technical documentation. Its many features include the ability to create animations. SolidWorks Animations allow users to create moving visualizations of their 3D models (Figure 3), allowing them to better understand the design and operation of the proposed product.

SolidWorks offers a variety of animation methods, including component animation, part animation, condensed assembly animation, and camera view animation. Users can define movements, rotations, transitions, and other parameters to create smooth animations. In addition, effects such as lighting, shading, and textures can be added to enhance the visual quality of animations.

SolidWorks Animations are useful for presenting and communicating designs with other people, as well as for verifying the functionality and movement of designed parts. They allow designers and engineers to visualize and analyze their projects before they are physically created, contributing to faster and more efficient product development [5].

SolidWorks Animations include:

- **Setting a Timeline:** When creating animations in SolidWorks, you can set a timeline that determines how movements and changes occur over time. You can define different animation stages and assign specific time intervals to them.
- **Keyframe animation:** SolidWorks Animations use a keyframe approach, which means that you define certain keypoints (keyframes) in time and the system automatically interpolates between

them. In this way, you can create smooth movements of objects or components.

- **Physical animations:** In addition to animating the components themselves, you can also use physical animations in SolidWorks. This means you can use physical properties like gravity, elasticity, friction, etc. to make objects behave according to the real laws of physics.
- **Camera and view animations:** SolidWorks Animations also allow for camera and view animations. This allows you to create dynamic tours of your models from different angles and perspectives.
- **Export animations:** After creating animations in SolidWorks, you can export them to various formats such as AVI, MP4, WMV, etc. You can then use these animations for presentations, websites, or other projects.
- **Interaction with other SolidWorks features:** You can easily integrate SolidWorks Animations with other features in SolidWorks. For example, you can create animations for collapsing or expanding components within a drawing or documentation. It is also possible to create animations for simulations within the SolidWorks Simulation module, which shows deformations and movements of materials.
- **Setting animation properties:** SolidWorks Animations provides various setting options that affect the visual output. You can adjust the animation speed, transitions between movements, control the duration of individual sections, and other parameters to achieve the desired effect.
- **Communication in assemblies:** Animations in SolidWorks allow you to display movement and interaction between different components in an assembly. This is very useful when examining the movement of individual parts and their proper functionality.
- **Motion and Collision Verification:** SolidWorks Animations can also be used to verify motion and detect collisions between components. In this way, you can detect potential problems in the proposed system before it is physically created.
- **Visualization settings:** SolidWorks offers various options for setting the visual page of animations. You can add different materials, colors, textures, and lighting for better visualization and a realistic look [6].

In the SolidWorks program, it is possible to animate various processes, be it production, kinematics, or motion. Figure 3 shows a robotic arm created in SolidWorks. As a classic 3D model, it is assembled as an assembly. In this mode, it is not possible to move it directly. It is necessary to set the degrees of freedom.

Use of production process simulation as a verification tool

Jan Kopeck, Miriam Pekarcikova, Marek Mizerak, Jozef Trojan

Defined degrees of freedom:

- gripper movement,
- movement of the gripper head,
- short and long arm movement,
- tower movement.

If the degrees of freedom are defined, the model behaves as a moving part. Subsequently, you define the object to be moved from position A to position B. In this case, it is a cube, but if the requirements in production are different, any model can be uploaded. The last thing to do is to set the gripper, to its zero position, fix the cube and move to position B.

If these requirements are defined, it is possible to start the animation of the transfer process.

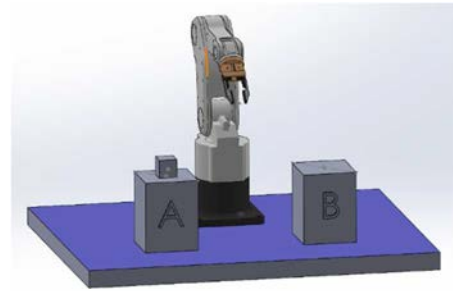


Figure 3 Setting up the robotic arm

Figure 4 shows the animation of moving the cube to the positions. In the Animation section of the SolidWorks program, it is possible to start and define animation properties. Using the displayed points of the animation of the individual parts, the exact time frame of the movement and the return to the initial position, the so-called zero point, is defined. Animation as part of the simulation helps companies define the equipment they use or will use safety features (exactly defined space where personnel can move and where it is already dangerous) as part of the renewal or optimization of the production process.

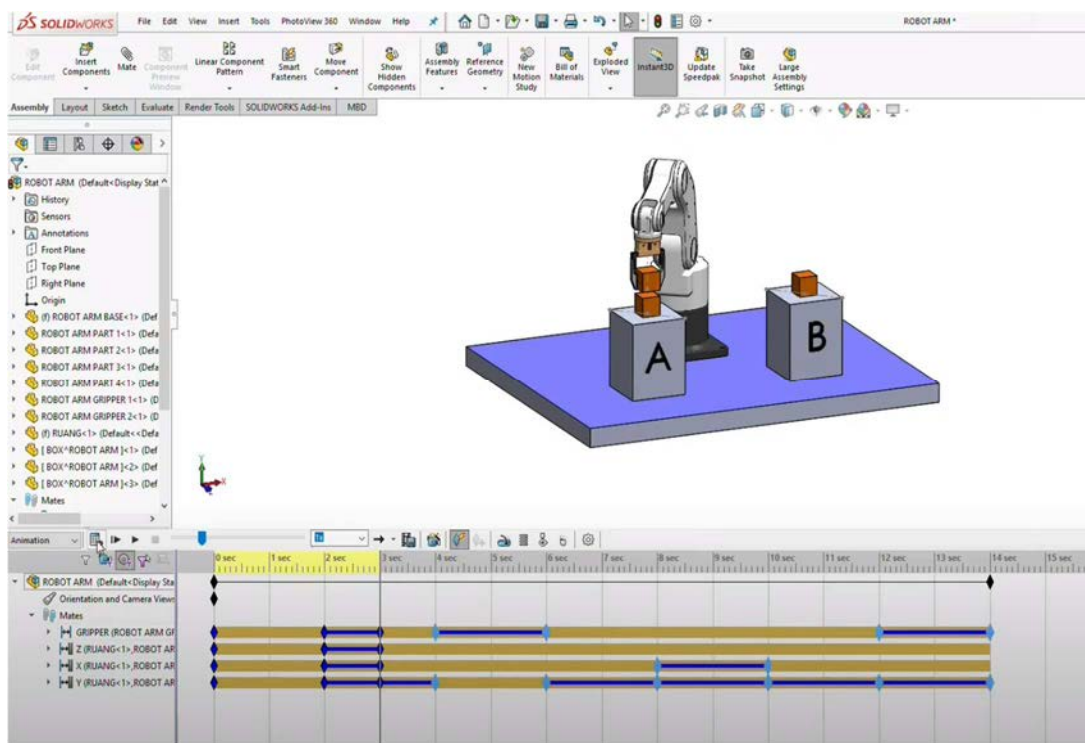


Figure 4 Animation of the work of the robotic arm

Another example of process animation is the production of plastic prints. Figure 5 shows part of a plastic press. A partial 3D model is sufficient for animation because only this part performs movement, the rest of the machine is static. The procedure is very similar to the robotic arm. Define the degrees of freedom of the part,

connect them using the Mate tool of the program and check the functionality of the press assembly.

Use of production process simulation as a verification tool

Jan Kopeck, Miriam Pekarcikova, Marek Mizerak, Jozef Trojan

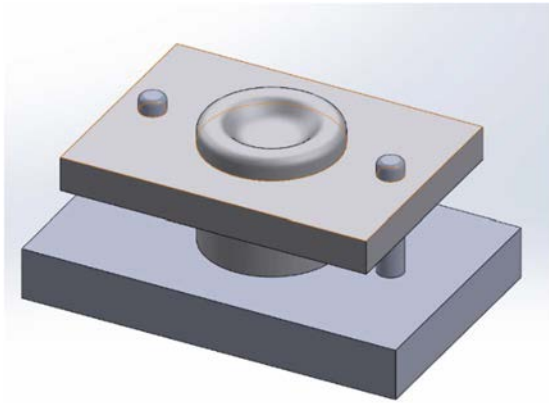


Figure 5 A partial model of the press equipment

Creating an animation of a pressing device (Figure 6) in the SolidWorks program is possible using various techniques and functions. Here is a procedure that can help you create this type of animation:

- **Create a model of the press:** First, you need to create a 3D model of the press in SolidWorks. This includes the creation of individual components (eg arm, press plate, injection tool) and the assembly of these components.
- **Define motion patterns and dependencies:** Next, you need to define motion patterns and dependencies for individual parts of the pressing equipment. This includes determining the movement of the arm, the precise opening and closing of the press plate, and other parameters that affect the movement of the equipment.

- **Create animation using the keyframe approach:** You can use the keyframe approach in SolidWorks to create animation. Place keyframes in time for various parameters and positions of individual components. SolidWorks then interpolates between these key points, which creates a smooth movement of the device.
- **Set Timeline and Transitions:** Set the animation timeline and add transitions between key points. This allows you to define the speed and duration of individual parts of the animation and create smooth transitions between different movements.
- **Add visual effects and textures:** To enhance the visual quality of the animation, you can add various visual effects such as lighting, shading, and textures. These effects can enhance the details of the molding equipment and create a more realistic appearance.
- **Verify the animation:** After creating the animation, play it and verify that the movement and flow are in line with your expectations. If necessary, adjust the parameters or positions of the key points to achieve the desired result.
- **Export the animation:** When you are satisfied with the result, you can export the animation of the pressing device to the desired form. SolidWorks allows you to export animation to various formats such as AVI, MP4, WMV, etc. You can then use this exported file for presentations, websites, or other projects.

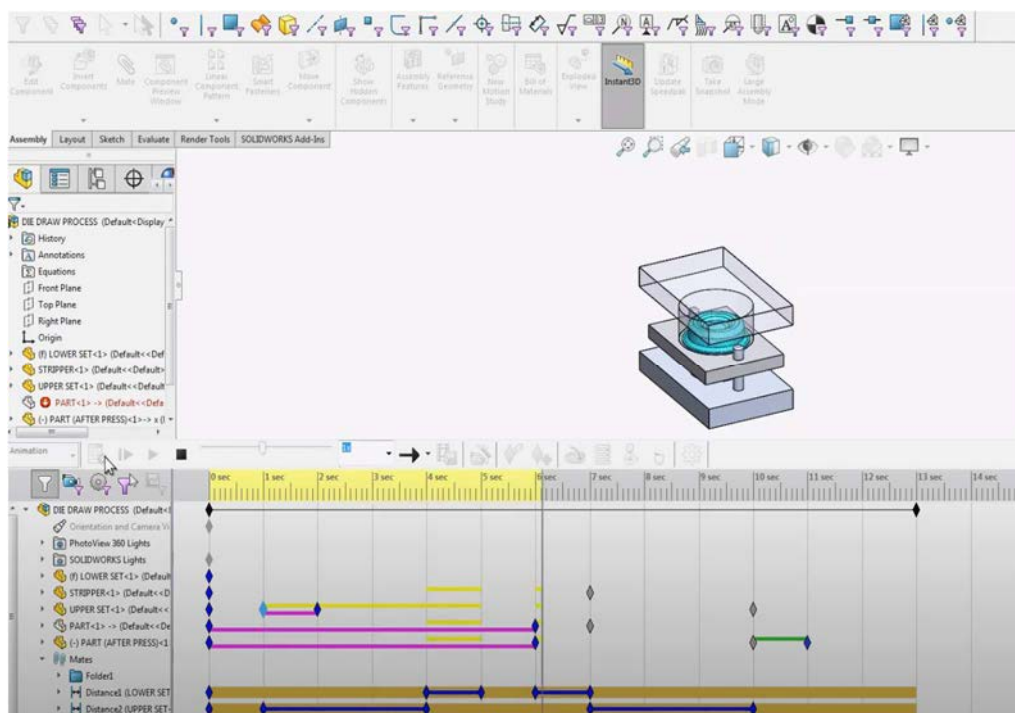


Figure 6 Animation of the pressing device

Use of production process simulation as a verification tool

Jan Kopeck, Miriam Pekarcikova, Marek Mizerak, Jozef Trojan

In addition, in SolidWorks, it is also possible to create simulations of the pressing process, where you can model material deformations and monitor force effects during pressing. These simulations create a smooth transition between the initial and final state, which allows for more accurate visualization and analysis of the molding process

3 Conclusions

The use of production process simulation as a verification tool brings many advantages and perspectives to modern industry. This method enables accurate and thorough testing and evaluation of production processes and their effectiveness in a controlled virtual environment. The simulation enables the identification of potential defects, the optimization of production parameters, and the prevention of problems even before the actual start of the production process.

Verification using simulation enables obtaining valuable knowledge about the influence of various factors on the final product quality, optimizing production procedures, and minimizing the risk of errors. In this way, businesses can save time, resources, and costs that would otherwise be required to test and iterate real-world manufacturing processes.

Simulation tools enable the modeling and simulation of various scenarios and conditions, thereby enabling a holistic view of the production process. The results of these simulations provide reliable and accurate information that helps in the decision-making process and allows us to foresee possible problems and their solutions before they arise.

The use of production process simulation as a verification tool is therefore invaluable in modern industry. It provides companies with the opportunity to improve the efficiency, quality and competitiveness of their production processes. With the development of technology and the ever-increasing power of computers, production simulation is becoming more and more accurate and efficient, thus contributing to innovation and progress in the industrial sector.

Acknowledgement

This article was created by the implementation of the grant projects: APVV-17-0258 Digital engineering elements application in innovation and optimization of production flows, APVV-19-0418 Intelligent solutions to enhance business innovation capability in the process of transforming them into smart businesses. VEGA 1/0438/20 Interaction of digital technologies to support software and

hardware communication of the advanced production system platform. KEGA 020TUKE-4/2023 Systematic development of the competence profile of students of industrial and digital engineering in the process of higher education. VEGA 1/0508/22 "Innovative and digital technologies in manufacturing and logistics processes and system".

References

- [1] SABBOUR, S., LASI, H., TESSIN, P.: *Business Intelligence and strategic decision simulation*, Proceedings of the International Conference on Computer Science and Applied Mathematics (ICCSAM), pp. 108-115, 2012.
- [2] DER ZEE, D.V., DER VORST, J.V.: *A Modeling Framework for Supply Chain Simulation, Opportunities for Improved Decision Making*, Vol. 36, pp. 65-95, 2005.
- [3] VDI, *Simulation of systems in materials handling, logistics and production – Fundamentals*, Düsseldorf, Beuth Verlag GmbH, 2014.
- [4] KOSTURIAK, J., GREGOR, M., SLAMKOVA, E., CHROMJAKOVA, F., MATUSZEK, J.: *Methods and Tools of the Enterprise Logistics*, TU Bielsko Biala, 1996.
- [5] LIN, J., YOON, B.W., PARK, J.: *Simulation-Based Optimization of Manufacturing Systems*, 2014.
- [6] MINKU, L.E., YAO, X.: *Virtual Manufacturing: Simulation-based Optimization of Discrete-Event Production Systems*, 2014.
- [7] ALMADA-LOBO, B., FERREIRA, L.M.: *Simulation-Based Optimization in Manufacturing Systems Design and Operations*, 2014.
- [8] GLYNN, P.W., ROBINSON, S.M.: *Simulation Optimization: A Review*, 2014.
- [9] SZAJNA, A., SZAJNA, J., STRYJSKI, R., SĄSIADK, M., WOŹNIAK, W.: *The Application of Augmented Reality Technology in the Production Processes*, 2019. In: Intelligent Systems in Production Engineering and Maintenance: conference proceedings ISPEM 2018, 2019, eds. A. Burduk, E. Chlebus, T. Nowakowski, A. Tubis, Cham: Springer Nature Switzerland (#), Advances in Intelligent Systems and Computing, 835, pp. 316-324, 2019.

Review process

Single-blind peer review process.

JOURNAL STATEMENT

| | |
|---------------------------|--|
| Journal name: | Acta Simulatio |
| Abbreviated key title: | Acta Simul |
| Journal title initials: | AS |
| Journal doi: | 10.22306/asim |
| ISSN: | 1339-9640 |
| Start year: | 2015 |
| The first publishing: | March 2015 |
| Issue publishing: | Quarterly |
| Publishing form: | On-line electronic publishing |
| Availability of articles: | Open Access Journal |
| Journal license: | CC BY-NC |
| Publication ethics: | COPE, ELSEVIER Publishing Ethics |
| Plagiarism check: | Worldwide originality control system |
| Peer review process: | Single-blind review at least two reviewers |
| Language: | English |
| Journal e-mail: | info@actasimulatio.eu |

The journal focuses mainly on the original and new, interesting, high-quality, theoretical, practical and application-oriented contributions to the field of science and research as well as to pedagogy and education in the area of simulation.

Acta Simulatio journal supports the San Francisco Declaration on Research Assessment (DORA). The primary directives include open access, reuse of outputs, diversity among authors and reviewers, peer review, description of provided services and related publishing charges.

| | |
|-------------------|---|
| Publisher: | 4S go, s.r.o. |
| Address: | Semsa 24, 044 21 Semsa, Slovak Republic, EU |
| Phone: | +421 948 366 110 |
| Publisher e-mail: | info@4sgo.eu |

**Responsibility for the content of a manuscript rests upon the authors
and not upon the editors or the publisher.**
